



LED LIGHTS

AWARD-WINNING ILLUMINATION

Impact-resistant, waterproof for non-submersion and tested to meet the highest standards put in place by the United States Coast Guard.



PROVIDING INNOVATION & SAFETY

Introducing two manual and electric mounts designed for raising and lowering a masthead anchor light from the safety of the deck. The Grand Slam 900 allows boaters to lift and descend the light by simply extending and rotating the Type-316L stainless-steel crank handle, which locks flush into the base. The Grand Slam 950 is the electric equivalent of the GS-900 and allows boaters to lift and descend the light with a simple push of a button. No manual crank action required!

GRAND SLAM 900 MASTHEAD ANCHOR LIGHT

- Ideal for powered vessels 39' and under
- Certified for USCG-required 3 NM
- Light runs on 12 volts and consists of four 3-watt LED Cree chips driven by two Mean Well drivers
- Light and shaft included
- Mounts through hardtops up to 2" thick
- 3-year limited warranty



GRAND SLAM 950 ELECTRIC MASTHEAD ANCHOR LIGHT

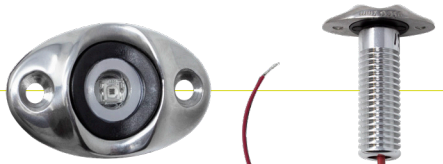
- Ideal for powered vessels 39' and under
- Certified for USCG-required 3 NM
- Lights runs on 12 volts and consists of four 3-watt LED Cree chips driven by two Mean Well drivers
- Uses only 1-amp of power when moving up or down
- Light and shaft included
- Easy surface mount installation for all top thicknesses



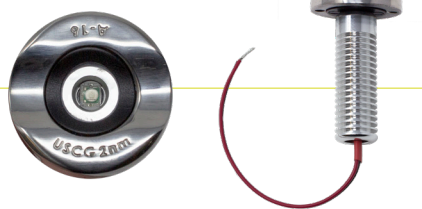
SURFACE MOUNT LED NAVIGATION LIGHTS

Discover our line of Surface Mount LED Navigation Light Sets – low-profile lights mounted in a heavy-gauge stainless-steel cover designed to fit on flat surfaces and ideal for powered vessels 40’ and under.

F38-6610D
1-3/4”

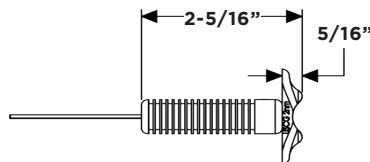
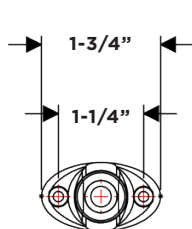


F38-6610G
1-3/8”

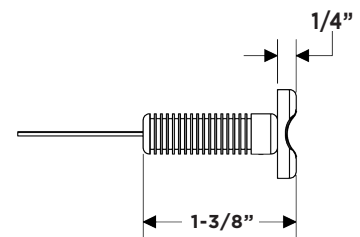
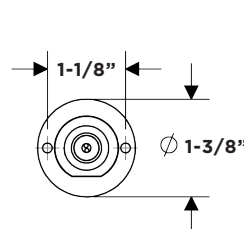


- ▶ Certified for USCG-required 2 NM
- ▶ Low-voltage 12 to 24VDC and water-resistant IP68 rating
- ▶ Provides 112.5° of unobstructed views with less glare
- ▶ Low draw of only .6 amps that compares to a 10-watt incandescent light
- ▶ Anodized cylindrical aluminum heat sink for maximum heat dissipation

F38-6610D

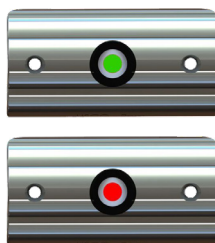


F38-6610G



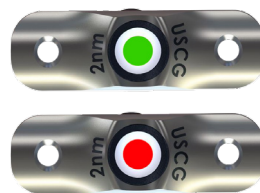
RUB RAIL MOUNTED LED NAVIGATION LIGHTS

Meets ABYC/USCG requirements for both sail and powerboat designation



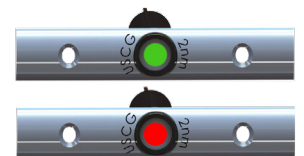
F38-6602
3-3/8”

- ▶ Patent USD760427
- ▶ Low-voltage 12-14VDC and water-resistant IP68 rating
- ▶ Provides a 112.5° unobstructed view with less glare
- ▶ Anodized aluminum heat sink for maximum heat dissipation
- ▶ LED lights are mounted in a heavy-gauged polished stainless-steel joiner cover



F38-6800D
2-1/2”

- ▶ Designed to fit the popular 3/4” insert profiles
- ▶ Low-voltage 12-14VDC and water-resistant IP68 rating
- ▶ Provides a 112.5° unobstructed view with less glare
- ▶ Special order item sold in pairs
- ▶ LED lights are mounted in a heavy-gauged polished stainless-steel joiner cover



F38-6810B
4”

- ▶ Designed to fit the popular 3/4” insert profiles
- ▶ Provides a 112.5° unobstructed view with less glare
- ▶ Low-voltage 12-14VDC and water-resistant IP68 rating
- ▶ LED lights are mounted in a heavy-gauged polished stainless-steel joiner cover



Explore our complete line of LED Lights
and more on our website.

[TACOMARINE.COM](https://www.tacomarine.com)

2022 V6

   [@tacomarine](https://www.facebook.com/tacomarine)  [@taco_marine](https://twitter.com/taco_marine) [#TACOLED](https://www.instagram.com/tacomarine)